

For Lease

OFFICE/LIGHT MANUFACTURING/WAREHOUSE/R&D

**51 NORTHWESTERN DRIVE, UNITS E & F
SALEM INDUSTRIAL PARK
SALEM, NEW HAMPSHIRE**



SPACE AVAILABLE: 11,005 SF +/-
BUILDING SIZE: 29,565 SF +/-
MINIMUM DIVISIBLE: 5,445 SF +/-
LOT SIZE: 5.89 ACRES
USE: OFFICE/LIGHT MANUFACTURING/WAREHOUSE/R&D
ZONING: INDUSTRIAL
PARKING: 20 or 2 PER 1000 SF LEASED
LEASE RATE: \$ CALL FOR CURRENT RATES
SPECIAL FEATURES: 400 AMPS, 277/480 V 3 PHASE, 4 WIRE; 400 AMPS, 120/208 V 3 PHASE, 4 WIRE. AIR CONDITIONED OFFICES AND PARTITIONED MEZZANINE.
COMMENTS: EXCELLENT HIGH BAY LIGHT MANUFACTURING SPACE, AIR CONDITIONED OFFICES, LESS THAN 1.5 MILES TO EXIT 2, I-93. 22 MILES FROM MANCHESTER-BOSTON AIRPORT, 36 MILES FROM BOSTON'S LOGAN AIRPORT.

NEW ENGLAND PIONEER ASSOCIATES, LLC

45 NORTHWESTERN DRIVE

SALEM, NH 03079

P (603) 870-5380 F (603) 870-5384

RHARRIS@NEWENGLANDPIONEER.COM

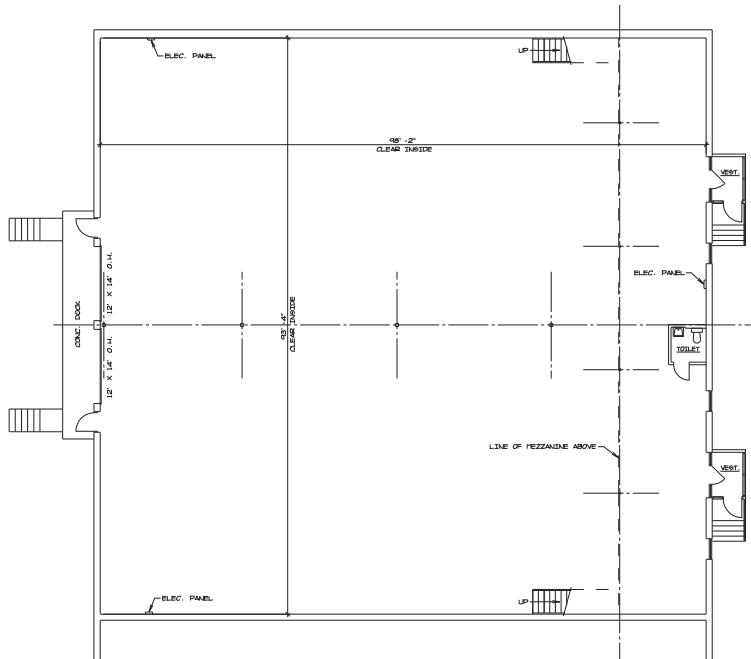
WWW.NEWENGLANDPIONEER.COM

The information contained herein is from sources deemed reliable, but is not guaranteed by New England Pioneer Associates, LLC. All data is subject to change, including but not limited to price, error, omissions, other conditions or withdrawal without notice.

For Lease

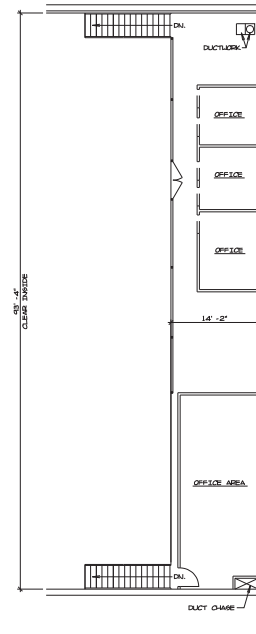
OFFICE/LIGHT MANUFACTURING/WAREHOUSE/R&D

51 NORTHWESTERN DRIVE, UNITS E & F
SALEM INDUSTRIAL PARK
SALEM, NEW HAMPSHIRE



FIRST FLOOR PLAN- EXISTING CONDITIONS
SCALE 1/8" = 1'-0"

Floor Plan



MEZZ. FLOOR PLAN- EXISTING CONDITIONS
SCALE 1/8" = 1'-0"

Mezzanine

NEW ENGLAND PIONEER ASSOCIATES, LLC

45 NORTHWESTERN DRIVE

SALEM, NH 03079

P (603) 870-5380 F (603) 870-5384

RHARRIS@NEWENGLANDPIONEER.COM

WWW.NEWENGLANDPIONEER.COM

The information contained herein is from sources deemed reliable, but is not guaranteed by New England Pioneer Associates, LLC. All data is subject to change, including but not limited to price, error, omissions, other conditions or withdrawal without notice.